

Power GeoPak - Best Practices to avoid Crashing



Power GeoPak Best Practices

- It is now apparent that SS2 files cause crashing.
- Start with SS4 seed files if at all possible.

 CADD_Standards

 Seed Files

 Design - English

 i_project_2d_PowerGEOPAK.dgn

 i_project_3d_PowerGEOPAK.dgn

Power GeoPak Best Practices

- Don't copy dgn files from other projects.
 - There seems to be file references embedded in the individual objects.



Power GeoPak Best Practices

- Never copy or rename civil files (i.e. there are civil components in the file).
 - Renaming contract plan sheet files is OK.



Power GeoPak Best Practices

- Don't click while the program is processing.
 - Multiple clicks cause crashes.

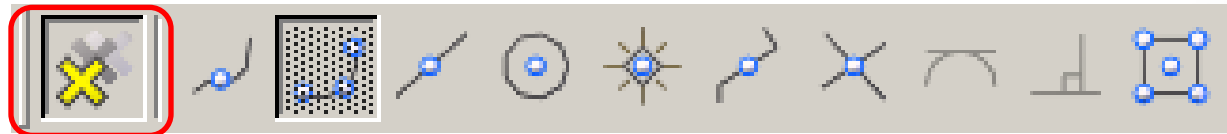


No Clicky Clicky

Power GeoPak Best Practices

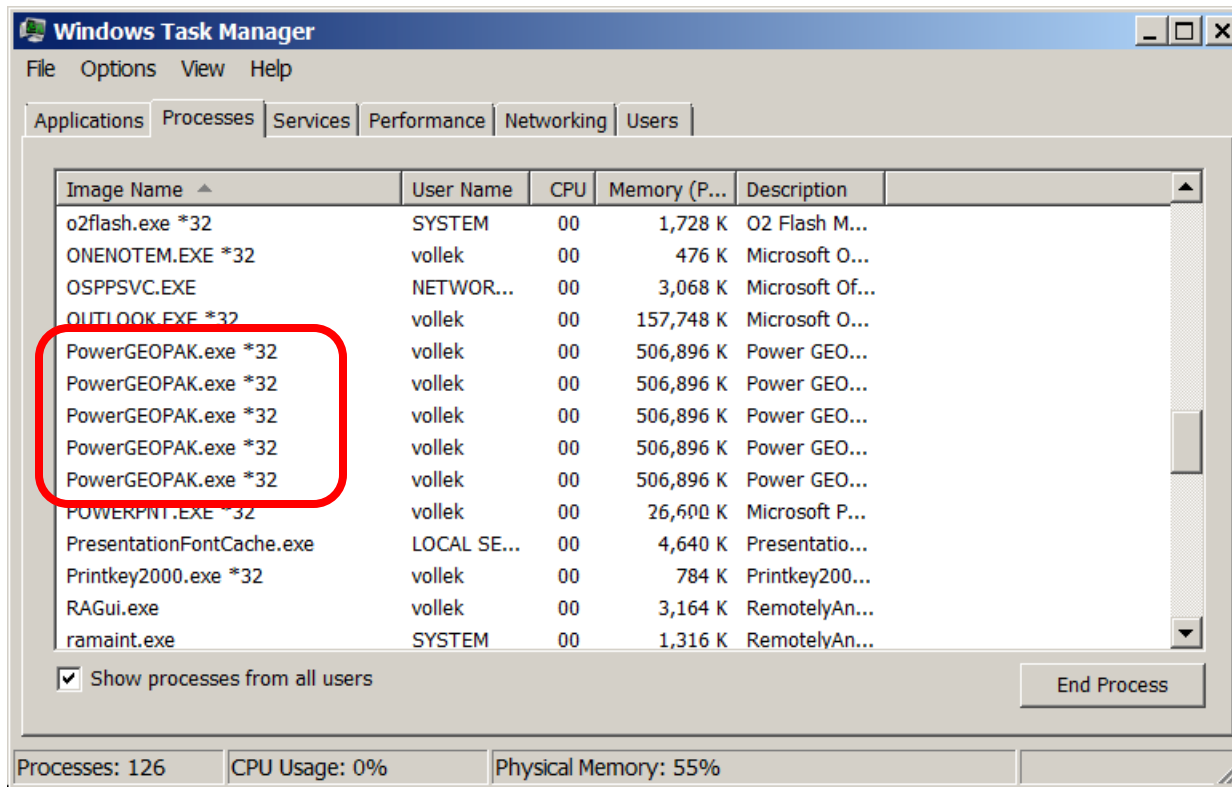
- Hard snaps with civil elements can be bad.
 - Use AccuSnap.

When AccuSnap is active potential snap points will be indicated by a dotted crosshair and the active snap icon. When you move closer to the available snap point this will turn into a yellow cross, at which point you can accept the snap with the Data button (left mouse button by default).



Power GeoPak Best Practices

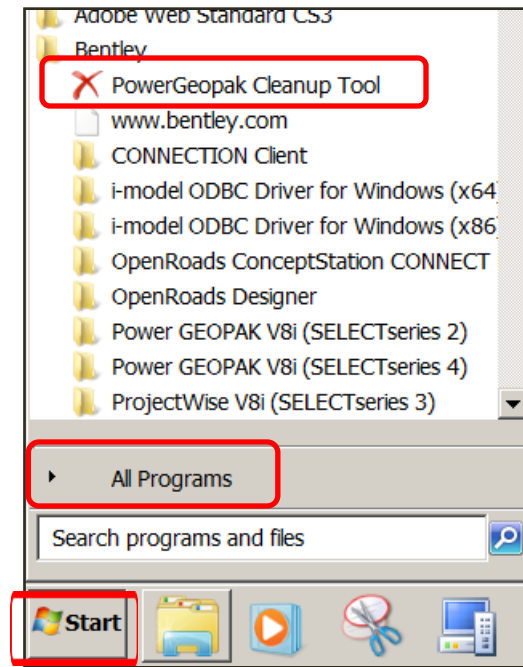
- Never run more than one session of Power GEOPAK.



Power GeoPak Best Practices

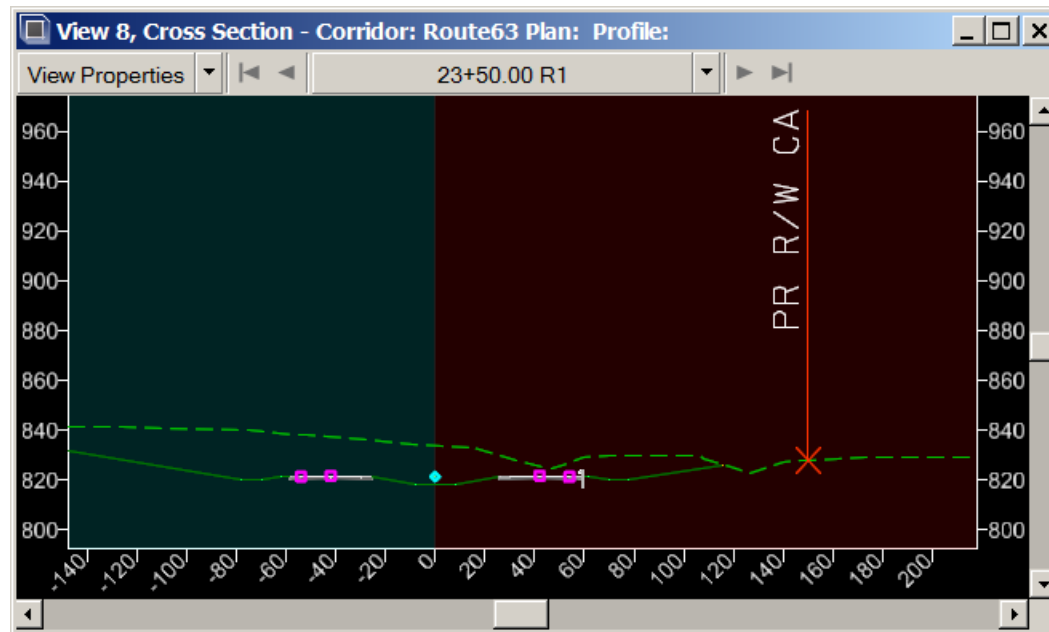
- If there is a crash **ALWAYS** run the cleanup tool.

- Windows Start
 - All Programs
 - *Power GeoPak Cleanup Tool*



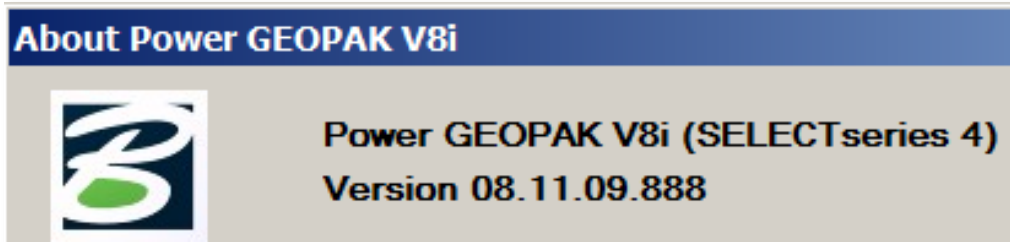
Power GeoPak Best Practices

- There is bug with crashing when displaying R/W labels in dynamic cross sections.



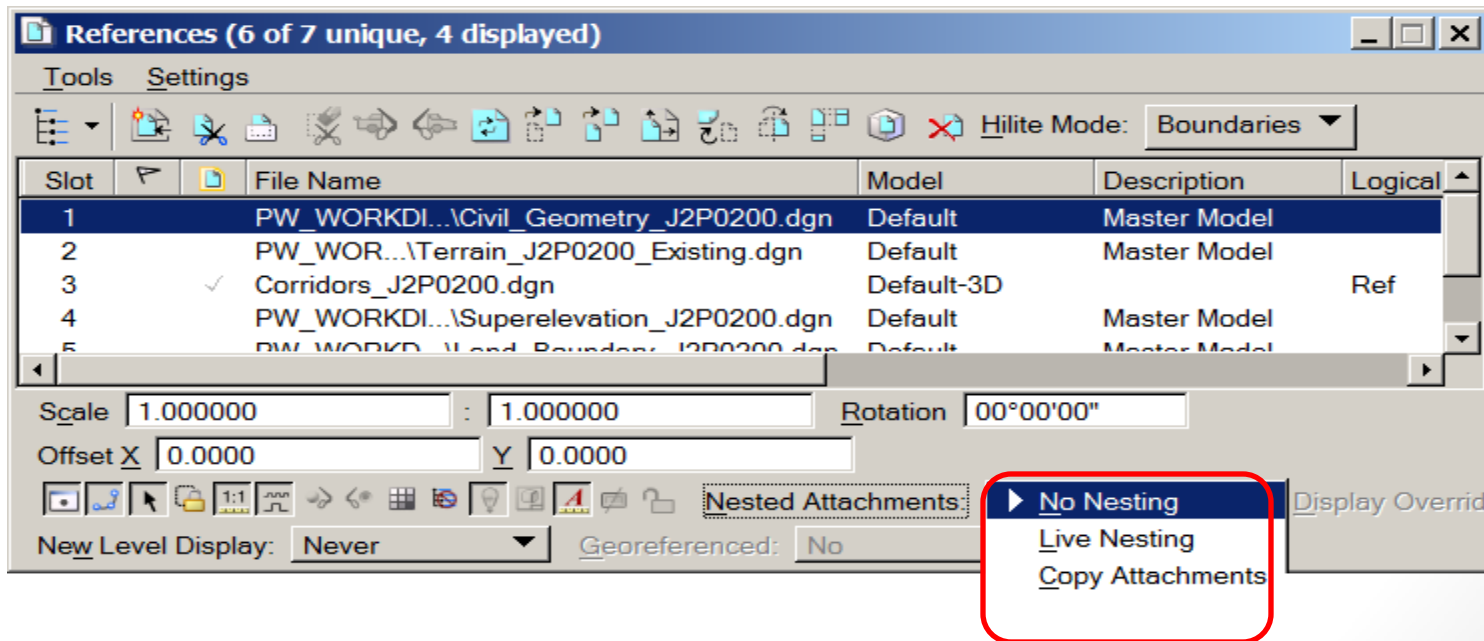
Power GeoPak Best Practices

- There is a new Power GEOPAK release that fixes some random crashing. We are installing it on new computers. It will be rolled out state-wide soon.



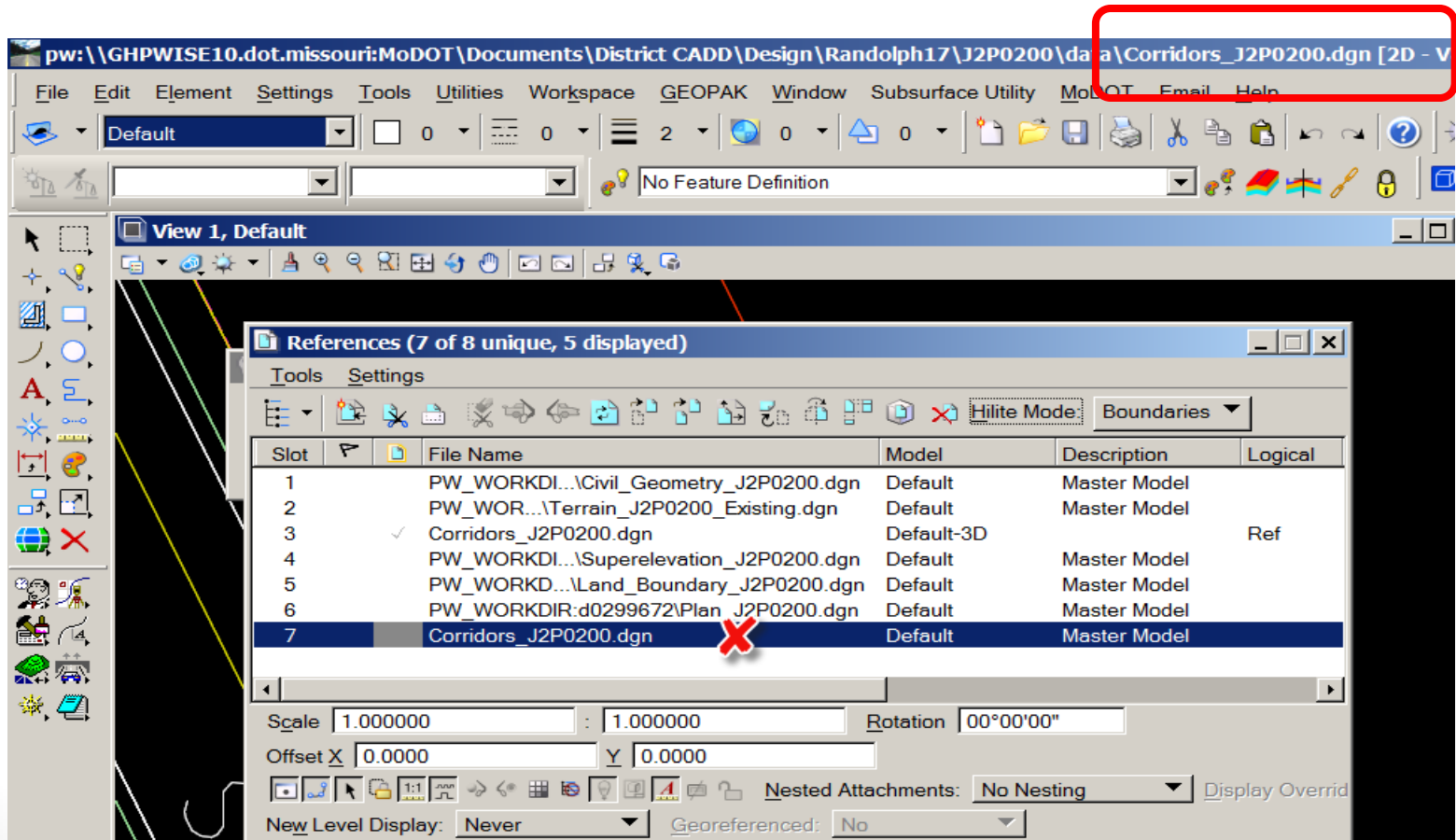
Power GeoPak Best Practices

- When manually attaching files always use “No Nesting”.



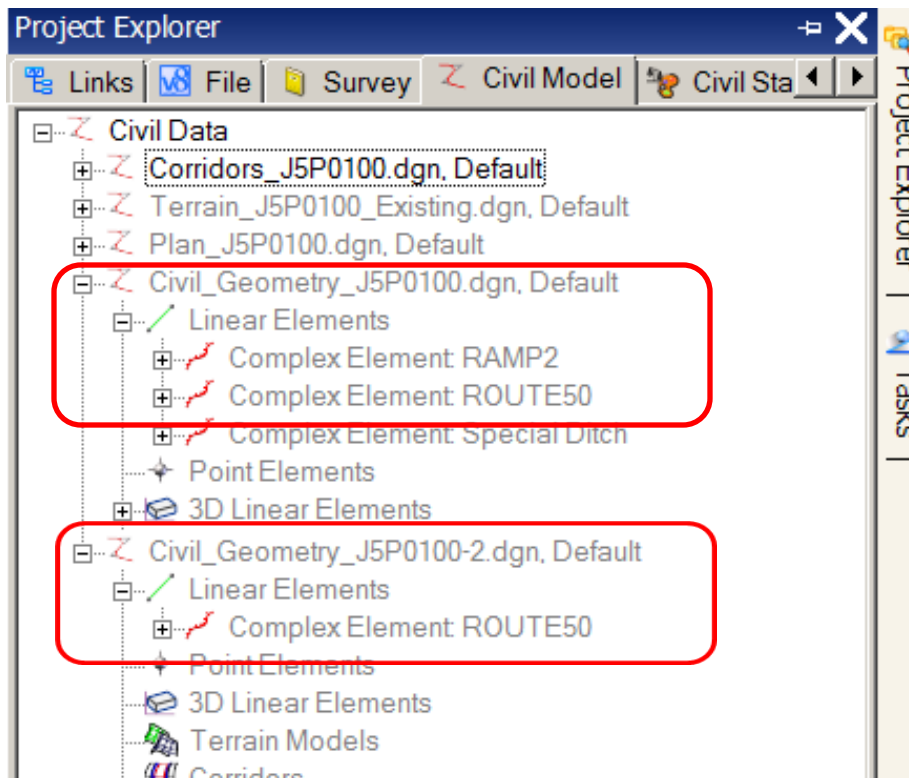
Power GeoPak Best Practices

- No manual self-referencing of files.



Power GeoPak Best Practices

- Don't reference in two files with similar Civil data.



Power GeoPak Best Practices

- Put civil cells in their own file.
- Break large corridors into separate dgn's.
- View performance video posted by CADD Support.
 - http://design.modot.mo.gov/CADD/BentleyCivil/Corridor_Modeling/Processing_Tips.wmv
- 32 bit computers don't perform as well as 64.
- If there are problems with the way Power GEOPAK is running do the following:
 - Exit Power GeoPak if not already
 - Check in all files ProjectWise.
 - Purge local copies in ProjectWise
 - Run Power GeoPak Cleanup Tool

 If problems persist call CADD Support